

# Tub Closures

## PUSH PULL®

Fit most bath wastes

### SPECIFICATIONS

#### FEATURES:

- Theft-resistant, brass stopper
- Metal strainer body, 1.25" deep
- Designed for heavy-duty use in hotels, motels, and rental property
- Replaceable, drip-proof Buna-N-Seal

#### PATENTS:

- <https://www.watcomfg.com/patents>

#### OPERATION:

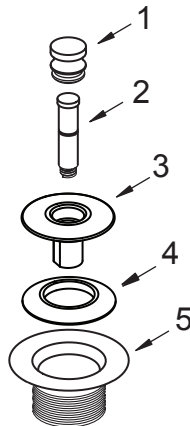
- Push down to close. Pull to open. No stopper rotation required.

#### THREAD SIZE:

- See chart on reverse side and Watco's current price list for all available thread sizes.



### PUSH PULL® Tub Closure PARTS LIST



#### WITH COARSE-THREAD BODY:

1. 01010\_\_\* ..... PP/LT Knob, brass
2. 11584 ..... PP 3/8" Pin, (11508) and Friction Ring (11504)
3. 01013\_\_\* ..... PP/LT Stopper, brass
4. 11507 ..... PP/LT Seal, 1-1/16" diameter
5. 01016\_\_\* ..... PP/LT Strainer Body, brass, 1.865"-11.5-1.25"

#### WITH FINE-THREAD BODY:

1. 01010\_\_\* ..... PP/LT Knob, brass
2. 11584 ..... PP 3/8" Pin, (11508) and Friction Ring (11504)
3. 01013\_\_\* ..... PP/LT Stopper, brass
4. 11507 ..... PP/LT Seal, 1-1/16" diameter
5. 01022\_\_\* ..... PP/LT Strainer Body, brass, 1.625"-16X1.25"

### Finishes Available in the PUSH PULL® Series:

Tub Closures:	38309		38317			
	38306		38312	38319		
	38301	38307	38313	38321	38333	
	38220	38305	38308	38325	38329	38651
CP - Chrome Plated	•	•	•	•	•	•
BB - Brushed Bronze	•	•	•	•	•	•
BN - Brushed Nickel	•	•			•	
BO - Bone	•	•		•	•	
BS - Biscuit		•			•	
BZ - Oil-Rubbed Bronze	•	•			•	
CB - Chrome Brushed	•	•			•	
NP - Nickel Polished		•			•	
PB - Polished Brass	•	•	•	•	•	
WH - White	•	•		•	•	
WI - Wrought Iron		•			•	



For More Information Contact:  
**WATCO Manufacturing Company, LLC**  
 1220 South Powell Road  
 Independence, MO 64057-2724  
 Ph. 816-796-3900  
[www.watcomfg.com](http://www.watcomfg.com)

# Tub Closures

## LIFT AND TURN

Fits most bath wastes

### SPECIFICATIONS

#### FEATURES:

- Theft-resistant, brass stopper
- Metal strainer body, 1.25" deep
- Replaceable, drip-proof Buna-N-Seal

#### PATENTS:

- <https://www.watcomfg.com/patents>

#### OPERATION:

- To open, lift stopper and turn; to close, turn stopper and push down.

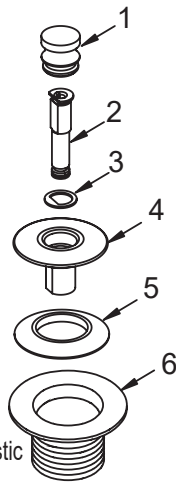
#### THREAD SIZE:

- See chart on reverse side and Watco's current price list for all available thread sizes.

## LIFT AND TURN Tub Closure PARTS LIST

#### WITH COARSE-THREAD BODY:

1. 01010\_\* ..... PP/LT Knob, brass
2. 11079 ..... Lift and Turn "D" Pin, threads O.D. 3/8"
3. 11088 ..... Lift and Turn "D" Ring
4. 11290CP ..... PUSH PULL® Stopper, plastic  
01013\_\* ..... PP/LT Stopper, brass
5. 11507 ..... PP/LT Seal, 1-1/16" diameter
6. 11492CP ..... LT/FA Strainer Body, zinc, 1.865"-11.5-1.25"  
01016\_\* ..... PP/LT Strainer Body, brass, 1.865"-11.5-1.25"



#### WITH FINE-THREAD BODY:

1. 01010\_\* ..... PP/LT Knob, brass
2. 11079 ..... Lift and Turn "D" Pin, threads O.D. 3/8"
3. 11088 ..... Lift and Turn "D" Ring
4. 11290CP ..... PUSH PULL® Stopper, plastic  
01013\_\* ..... PP/LT Stopper, brass
5. 11507 ..... PP/LT Seal, 1-1/16" diameter
6. 01022\_\* ..... PP/LT Strainer Body, brass, 1.625"-16X1.25"

### Finishes Available in the LIFT and TURN Series:

Tub Closures:	58306		58317			
	58301	58307	58321			
	58220	58305	58308	58309	58329	58333
CP - Chrome Plated	•	•	•	•	•	•
BB - Brushed Bronze		•			•	
BN - Brushed Nickel	•	•			•	
BO - Bone	•	•		•	•	
BS - Biscuit		•			•	
BZ - Oil-Rubbed Bronze	•	•			•	
CB - Chrome Brushed	•	•			•	
NP - Nickel Polished		•			•	
PB - Polished Brass	•	•	•	•	•	
WH - White	•	•		•	•	
WI - Wrought Iron		•			•	



For More Information Contact:  
**WATCO Manufacturing Company, LLC**  
 1220 South Powell Road  
 Independence, MO 64057-2724  
 Ph. 816-796-3900  
[www.watcomfg.com](http://www.watcomfg.com)