

Flexible

Flex900 Innovator®

Models Flex916 / Flex924

Flexible tubing in place of the rigid PVC overflow pipe allows the overflow tubing to easily bend over from a misaligned drain pipe to the overflow hole of the tub.

SPECIFICATIONS

FEATURES:

- Eliminates the need to use 45° elbows for offsets. Just bend the flexible tubing to correct the misalignment.
- Eliminates all screws and a separate overflow test plug
- Eliminates leaks due to loose overflow attachment
- Eliminates dual inventory of one- and two-hole overflow plates
- Overflow elbow/flexible tubing joint is factory-welded; flexible tubing/sanitary tee joint is designed to cut and fit in the field.

Approvals:

- Non-corrugated, flexible tubing.
- IAPMO (UPC) approved, File 2255.
- Complies with ASME A112.18.2-2005/ CSA B125.2-05; and IAPMO PS 69-2006.

Patents: <https://www.watcomfg.com/patents/>

Thread Size:

- 1½" – 11½ NPSM (Coarse Thread)
- 1.865" Major Diameter (outside thread diameter)
- 11.5 threads per inch

Piping: Schedule 40, available PVC and ABS

ROUGH-IN (RI's) and STOPPER/FACEPLATE (SF's)



Flexible tubing is adjustable to compensate for misalignment.

Model Flex916: Fits most tubs 14"-16" high
Length of flexible tubing = 16"

Model Flex924: Fits most tubs to 24" high
Length of flexible tubing = 24"

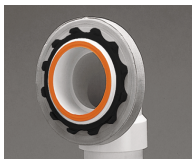


ADA

PRESFLO® (PF)
Foot Actuated (FA) only



Includes built-in test membrane



Easily remove membrane after test



Snap-on overflow plate.
No screws

See price list for complete item numbers and available options.

When ordering, please specify complete item number and any applicable option codes.

WATCO



For more information, contact:

WATCO Manufacturing Company, LLC

1220 South Powell Road

Independence, MO 64057-2724

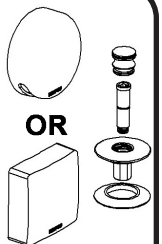
Ph. 816-796-3900 • 800-821-8576

www.watcomfg.com

STOPPER/FACEPLATE'S

(example: 900-PPSF-0-CP)

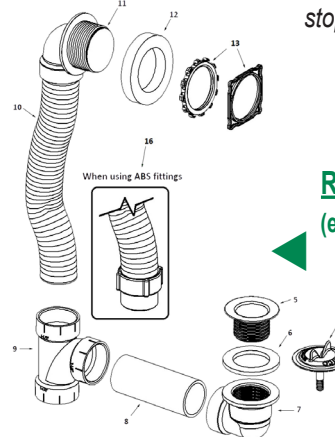
Overflow plate and stopper assembly.
NO strainer body.



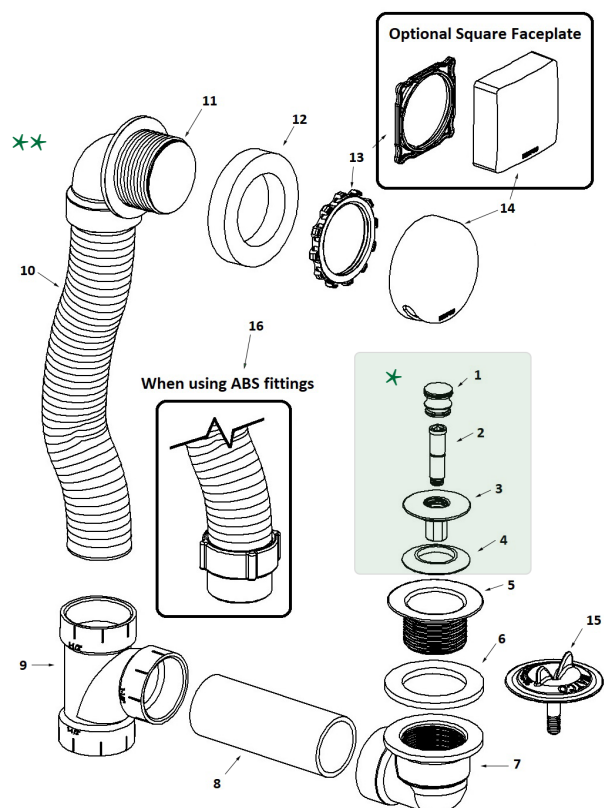
ROUGH-IN'S

(example: Flex916-PPRI-PVC-CP)

All parts, including strainer body.
NO overflow plate or stopper assembly.



Flex900 Innovator® Parts List

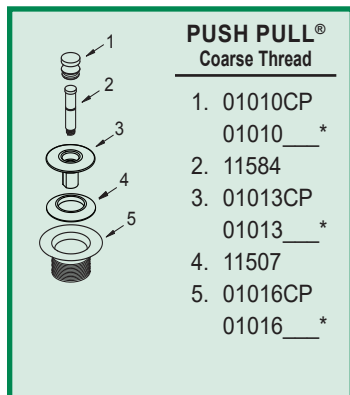


Item	Part #	Description
1	01010CP	PUSH PULL® Knob, Brass
2	11510	Friction Ring and Post (11505 & 11532)
3	01013CP	Stopper, Brass
4	11507	Seal, 1-1/16" dia.
5	01016CP	Strainer Body, 1.865" - 11.5 - 1.25"
6	10696	Drain Ell Washer, 1.5" gray
7	14008	Drain Ell, Schedule 40, PVC
8	11606	Pipe, Schedule 40, PVC, 1.5" x 4.625"
9	14010	Sanitary Tee, Schedule 40, PVC
10	(not sold separately)	Flex916: Flexible Tubing, 1.5" x 16.0" Flex924: Flexible Tubing, 1.5" x 24.0"
#10 FACTORY-WELDED TO #11:		
11	14020	Innovator® Overflow Ell, Schedule 40, PVC
12	10675	Overflow Ell Washer, Foam
13	11121 11127	ABS Star Retainer Nut for Innovator® ABS Square Retainer Nut for Innovator®
14	01005CP 01007CP	Overflow Plate for Innovator® Square Face Plate for Innovator®
15	11577	Test Plug with "O"-Ring-type Gasket

★ SF: (example: 900-PPSF) Parts #1 thru #4, and #14

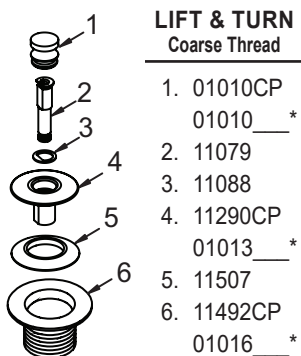
★★ RI: (example: FLEX916-PPRI) Parts #5 thru #13 and #15

OPTIONAL TUB CLOSURES FOR FLEX900-SERIES BATH WASTES (PUSH PULL® ALSO SHOWN ABOVE)



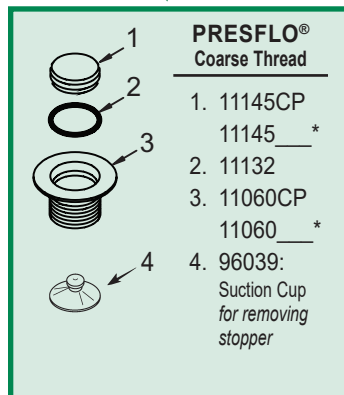
PUSH PULL® Coarse Thread

- 01010CP
01010_*
- 11584
- 01013CP
01013_*
- 11507
- 01016CP
01016_*



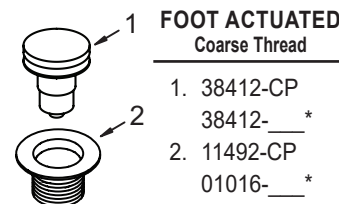
LIFT & TURN Coarse Thread

- 01010CP
01010_*
- 11079
- 11088
- 11290CP
01013_*
- 11507
- 11492CP
01016_*



PRESFLO® Coarse Thread

- 11145CP
11145_*
- 11132
- 11060CP
11060_*
- 96039:
Suction Cup
for removing
stopper



FOOT ACTUATED Coarse Thread

- 38412-CP
38412-_*
- 11492-CP
01016-_*

*If finish other than Chrome is desired, please use this part number and indicate desired finish.

Finishes Available in the FLEX900 Series:

Tub Closure:	PUSH PULL®	LIFT & TURN	PRESFLO®	FOOT ACT.
BB - Brushed Bronze	•	•	•	•
BN - Brushed Nickel	•	•	•	•
BO - Bone	•	•	•	•
BS - Biscuit	•	•	•	•
BZ - Oil-Rubbed Bronze	•	•	•	•
CB - Chrome Brushed	•	•	•	•
CP - Chrome Plated	•	•	•	•
NP - Nickel Polished	•	•	•	•
PB - Polished Brass	•	•	•	•
WH - White	•	•	•	•
WI - Wrought Iron	•	•	•	•