

Universal NuFit® Trim Kits & Tub Closures: FOOT ACTUATED

INNOVATOR FACEPLATE: With Grid (See page 3 for more options.)

10 PER CARTON

948700-FA-CP-G FA Trim Kit with Grid and Silicone Packet	948700-FA-CP-G-2P FA Trim Kit with Grid, Silicone, #47 & #51 Pins	948700-FA-CP-G-3P FA Trim Kit with Grid, Silicone & All 3 Pins	948701-FA-CP-G FA Trim Kit with Grid and #11547 Pin (-47)	948701-FA-CP-G-2P FA Trim Kit with Grid, #47 & #51 Pins
#11547 3/8-5/16	#10-24 3/8-5/16			
948700-FA-CP-G 28.60	948700-FA-CP-G-2P 37.00	948700-FA-CP-G-3P 41.20	948701-FA-CP-G 28.60	948701-FA-CP-G-2P 32.80
948700-FA-BN-G 44.55	948700-FA-BN-G-2P 52.95	948700-FA-BN-G-3P 57.15	948701-FA-BN-G 44.55	948701-FA-BN-G-2P 48.75
948700-FA-BZ-G 44.55	948700-FA-BZ-G-2P 52.95	948700-FA-BZ-G-3P 57.15	948701-FA-BZ-G 44.55	948701-FA-BZ-G-2P 48.75
948700-FA-CB-G 74.30	948700-FA-CB-G-2P 82.70	948700-FA-CB-G-3P 86.90	948701-FA-CB-G 74.30	948701-FA-CB-G-2P 78.50
948700-FA-PB-G 49.60	948700-FA-PB-G-2P 58.00	948700-FA-PB-G-3P 62.20	948701-FA-PB-G 49.60	948701-FA-PB-G-2P 53.80

1-HOLE : With Grid (For 2-Hole, add "-2H") (See page 3 for more options.)

48700-FA-CP-G FA Trim Kit with Grid and Silicone Packet	48700-FA-CP-G-2P FA Trim Kit with Grid, Silicone, #47 & #51 Pins	48700-FA-CP-G-3P FA Trim Kit with Grid, Silicone & All 3 Pins	48701-FA-CP-G FA Trim Kit with Grid and #11547 Pin (-47)	48701-FA-CP-G-2P FA Trim Kit with Grid, #47 & #51 Pins
#11547 3/8-5/16	#10-24 3/8-5/16			
48700-FA-CP-G 28.60	48700-FA-CP-G-2P 37.00	48700-FA-CP-G-3P 41.20	48701-FA-CP-G 28.60	48701-FA-CP-G-2P 32.80
48700-FA-BN-G 44.55	48700-FA-BN-G-2P 52.95	48700-FA-BN-G-3P 57.15	48701-FA-BN-G 44.55	48701-FA-BN-G-2P 48.75
48700-FA-BZ-G 44.55	48700-FA-BZ-G-2P 52.95	48700-FA-BZ-G-3P 57.15	48701-FA-BZ-G 44.55	48701-FA-BZ-G-2P 48.75
48700-FA-CB-G 74.30	48700-FA-CB-G-2P 82.70	48700-FA-CB-G-3P 86.90	48701-FA-CB-G 74.30	48701-FA-CB-G-2P 78.50
48700-FA-PB-G 49.60	48700-FA-PB-G-2P 58.00	48700-FA-PB-G-3P 62.20	48701-FA-PB-G 49.60	48701-FA-PB-G-2P 53.80

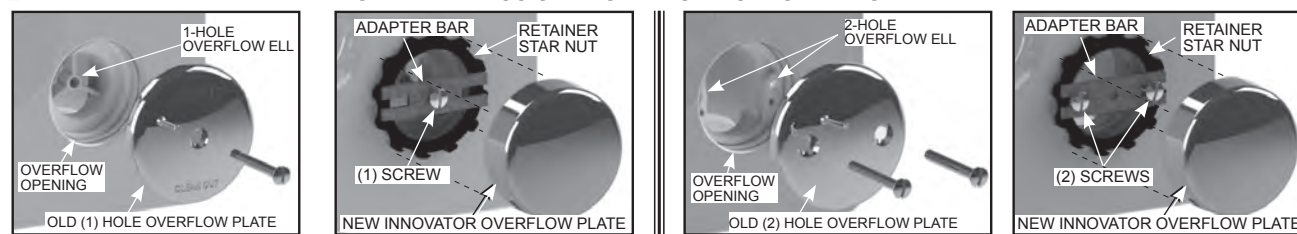
TUB CLOSURES: With Grid (See page 3 for more options.)

20 PER CARTON

48750-FA-CP-G FA Tub Closure with Grid and Silicone Packet	48750-FA-CP-G-2P FA Tub Closure with Grid, Silicone, #47 & #51 Pins	48750-FA-CP-G-3P FA Tub Closure with Grid, Silicone & All 3 Pins	48751-FA-CP-G FA Tub Closure with Grid and #11547 Pin (-47)	48751-FA-CP-G-2P FA Tub Closure with Grid, #47 & #51 Pins
#11547 3/8-5/16	#10-24 3/8-5/16			
48750-FA-CP-G 21.95	48750-FA-CP-G-2P 30.35	48750-FA-CP-G-3P 34.55	48751-FA-CP-G 21.95	48751-FA-CP-G-2P 26.15
48750-FA-BN-G 35.10	48750-FA-BN-G-2P 43.50	48750-FA-BN-G-3P 47.70	48751-FA-BN-G 35.10	48751-FA-BN-G-2P 39.30
48750-FA-BZ-G 35.10	48750-FA-BZ-G-2P 43.50	48750-FA-BZ-G-3P 47.70	48751-FA-BZ-G 35.10	48751-FA-BZ-G-2P 39.30
48750-FA-CB-G 53.05	48750-FA-CB-G-2P 61.45	48750-FA-CB-G-3P 65.65	48751-FA-CB-G 53.05	48751-FA-CB-G-2P 57.25
48750-FA-PB-G 37.80	48750-FA-PB-G-2P 46.20	48750-FA-PB-G-3P 50.40	48751-FA-PB-G 37.80	48751-FA-PB-G-2P 42.00

Convert an existing 1-hole or 2-hole faceplate to the Innovator® snap-on faceplate.

INSTRUCTIONS FOR CONVERTING AN EXISTING 1-HOLE OR 2-HOLE OVERFLOW PLATE TO A NEW WATCO SNAP-ON INNOVATOR® OVERFLOW PLATE



INTRODUCING Universal NuFit®



Makes Old Bathtub Drains Look *New* in Minutes!

NINE POPULAR FINISHES AVAILABLE



Universal NuFit® Trim Kits & Tub Closures: **PUSH PULL®**

INNOVATOR FACEPLATE: With Grid (For NO Grid, delete the "-G".) **10 PER CARTON**

948700-PP-CP-G PP Trim Kit with Grid and Silicone Packet	948700-PP-CP-G-2P PP Trim Kit with Grid, Silicone, #47 & #51 Pins	948700-PP-CP-G-3P PP Trim Kit with Grid, Silicone & All 3 Pins	948701-PP-CP-G PP Trim Kit with Grid and #11547 Pin (-47)	948701-PP-CP-G-2P PP Trim Kit with Grid, #47 & #51 Pins
#10-24 3/8-5/16	#10-24 3/8-5/16	#10-24 3/8-5/16	#11547 3/8-5/16	#10-24 3/8-5/16

948700-PP-CP-G	24.50	948700-PP-CP-G-2P	32.90	948700-PP-CP-G-3P	37.10	948701-PP-CP-G	24.50	948701-PP-CP-G-2P	28.70
948700-PP-BB-G	164.35	948700-PP-BB-G-2P	172.75	948700-PP-BB-G-3P	176.95	948701-PP-BB-G	164.35	948701-PP-BB-G-2P	168.55
948700-PP-BN-G	44.55	948700-PP-BN-G-2P	52.95	948700-PP-BN-G-3P	57.15	948701-PP-BN-G	44.55	948701-PP-BN-G-2P	48.75
948700-PP-BS-G	42.50	948700-PP-BS-G-2P	50.90	948700-PP-BS-G-3P	55.10	948701-PP-BS-G	42.50	948701-PP-BS-G-2P	46.70
948700-PP-BZ-G	44.55	948700-PP-BZ-G-2P	52.95	948700-PP-BZ-G-3P	57.15	948701-PP-BZ-G	44.55	948701-PP-BZ-G-2P	48.75
948700-PP-CB-G	74.30	948700-PP-CB-G-2P	82.70	948700-PP-CB-G-3P	86.90	948701-PP-CB-G	74.30	948701-PP-CB-G-2P	78.50
948700-PP-NP-G	49.50	948700-PP-NP-G-2P	57.90	948700-PP-NP-G-3P	62.10	948701-PP-NP-G	49.50	948701-PP-NP-G-2P	53.70
948700-PP-PB-G	49.60	948700-PP-PB-G-2P	58.00	948700-PP-PB-G-3P	62.20	948701-PP-PB-G	49.60	948701-PP-PB-G-2P	53.80
948700-PP-WH-G	38.25	948700-PP-WH-G-2P	46.65	948700-PP-WH-G-3P	50.85	948701-PP-WH-G	38.25	948701-PP-WH-G-2P	42.45

1-HOLE : With Grid (For 2-Hole, add "-2H / For NO Grid, delete the "-G".)

48700-PP-CP-G PP Trim Kit with Grid and Silicone Packet	48700-PP-CP-G-2P PP Trim Kit with Grid, Silicone, #47 & #51 Pins	48700-PP-CP-G-3P PP Trim Kit with Grid, Silicone & All 3 Pins	48701-PP-CP-G PP Trim Kit with Grid and #11547 Pin (-47)	48701-PP-CP-G-2P PP Trim Kit with Grid, #47 & #51 Pins
#10-24 3/8-5/16	#10-24 3/8-5/16	#10-24 3/8-5/16	#11547 3/8-5/16	#10-24 3/8-5/16

48700-PP-CP-G	24.50	48700-PP-CP-G-2P	32.90	48700-PP-CP-G-3P	37.10	48701-PP-CP-G	24.50	48701-PP-CP-G-2P	28.70
48700-PP-BB-G	164.35	48700-PP-BB-G-2P	172.75	48700-PP-BB-G-3P	176.95	48701-PP-BB-G	164.35	48701-PP-BB-G-2P	168.55
48700-PP-BN-G	44.55	48700-PP-BN-G-2P	52.95	48700-PP-BN-G-3P	57.15	48701-PP-BN-G	44.55	48701-PP-BN-G-2P	48.75
48700-PP-BS-G	42.50	48700-PP-BS-G-2P	50.90	48700-PP-BS-G-3P	55.10	48701-PP-BS-G	42.50	48701-PP-BS-G-2P	46.70
48700-PP-BZ-G	44.55	48700-PP-BZ-G-2P	52.95	48700-PP-BZ-G-3P	57.15	48701-PP-BZ-G	44.55	48701-PP-BZ-G-2P	48.75
48700-PP-CB-G	74.30	48700-PP-CB-G-2P	82.70	48700-PP-CB-G-3P	86.90	48701-PP-CB-G	74.30	48701-PP-CB-G-2P	78.50
48700-PP-NP-G	49.50	48700-PP-NP-G-2P	57.90	48700-PP-NP-G-3P	62.10	48701-PP-NP-G	49.50	48701-PP-NP-G-2P	53.70
48700-PP-PB-G	49.60	48700-PP-PB-G-2P	58.00	48700-PP-PB-G-3P	62.20	48701-PP-PB-G	49.60	48701-PP-PB-G-2P	53.80
48700-PP-WH-G	38.25	48700-PP-WH-G-2P	46.65	48700-PP-WH-G-3P	50.85	48701-PP-WH-G	38.25	48701-PP-WH-G-2P	42.45

TUB CLOSURES: With Grid (For NO Grid, delete the "-G".) **20 PER CARTON**

48750-PP-CP-G PP Tub Closure with Grid and Silicone Packet	48750-PP-CP-G-2P PP Tub Closure with Grid, Silicone, #47 & #51 Pins	48750-PP-CP-G-3P PP Tub Closure with Grid, Silicone & All 3 Pins	48751-PP-CP-G PP Tub Closure with Grid and #11547 Pin (-47)	48751-PP-CP-G-2P PP Tub Closure with Grid, #47 & #51 Pins
#10-24 3/8-5/16	#10-24 3/8-5/16	#10-24 3/8-5/16	#11547 3/8-5/16	#10-24 3/8-5/16

48750-PP-CP-G	18.85	48750-PP-CP-G-2P	27.25	48750-PP-CP-G-3P	31.45	48751-PP-CP-G	18.85	48751-PP-CP-G-2P	23.05
48750-PP-BB-G	120.25	48750-PP-BB-G-2P	128.65	48750-PP-BB-G-3P	132.85	48751-PP-BB-G	120.25	48751-PP-BB-G-2P	124.45
48750-PP-BN-G	35.10	48750-PP-BN-G-2P	43.50	48750-PP-BN-G-3P	47.70	48751-PP-BN-G	35.10	48751-PP-BN-G-2P	39.30
48750-PP-BS-G	34.00	48750-PP-BS-G-2P	42.40	48750-PP-BS-G-3P	46.60	48751-PP-BS-G	34.00	48751-PP-BS-G-2P	38.20
48750-PP-BZ-G	35.10	48750-PP-BZ-G-2P	43.50	48750-PP-BZ-G-3P	47.70	48751-PP-BZ-G	35.10	48751-PP-BZ-G-2P	39.30
48750-PP-CB-G	53.05	48750-PP-CB-G-2P	61.45	48750-PP-CB-G-3P	65.65	48751-PP-CB-G	53.05	48751-PP-CB-G-2P	57.25
48750-PP-NP-G	39.00	48750-PP-NP-G-2P	47.40	48750-PP-NP-G-3P	51.60	48751-PP-NP-G	39.00	48751-PP-NP-G-2P	43.20
48750-PP-PB-G	37.80	48750-PP-PB-G-2P	46.20	48750-PP-PB-G-3P	50.40	48751-PP-PB-G	37.80	48751-PP-PB-G-2P	42.00
48750-PP-WH-G	30.60	48750-PP-WH-G-2P	39.00	48750-PP-WH-G-3P	43.20	48751-PP-WH-G	30.60	48751-PP-WH-G-2P	34.80

Universal NuFit® Trim Kits & Tub Closures (Cont.): **PUSH PULL®**

INNOVATOR FACEPLATE - Cont.

948700-PP-CP-G-47 PP Trim Kit with Grid, Silicone & #11547 Pin	94870N-PP-CP-G PP Trim Kit with Grid <i>Add desired option.</i>	94870N-PP-CP-G-WB PP Trim Kit with Grid Watco Bonding Strip
3/8-5/16	No Silicone or Pin	

948700-PP-CP-G-47	28.70	94870N-PP-CP-G	20.30	94870N-PP-CP-G-WB	24.50
948700-PP-BB-G-47	168.55	94870N-PP-BB-G	160.15	94870N-PP-BB-G-WB	164.35
948700-PP-BN-G-47	48.75	94870N-PP-BN-G	40.35	94870N-PP-BN-G-WB	44.55
948700-PP-BS-G-47	46.70	94870N-PP-BS-G	38.30	94870N-PP-BS-G-WB	42.50
948700-PP-BZ-G-47	48.75	94870N-PP-BZ-G	40.35	94870N-PP-BZ-G-WB	44.55
948700-PP-CB-G-47	78.50	94870N-PP-CB-G	70.10	94870N-PP-CB-G-WB	74.30
948700-PP-NP-G-47	53.70	94870N-PP-NP-G	45.30	94870N-PP-NP-G-WB	49.50
948700-PP-PB-G-47	53.80	94870N-PP-PB-G	45.40	94870N-PP-PB-G-WB	49.60
948700-PP-WH-G-47	42.45	94870N-PP-WH-G	34.05	94870N-PP-WH-G-WB	38.25

STOPPER: Push Pull® / Foot Actuated

-PP - Push Pull® With or without the Grid	-FA - Foot Actuated FA must have the Grid.

BODY: Without Grid / With Grid (-G)

Without Grid Body Delete "-G" from part #.	-G With Grid Body FA must have the Grid.

2-Hole Faceplate

	-2H Add to end of part number.
--	--

Additional Options: (Add to Part Number)

-47 #11547 Pin 3/8-5/16 Brass Pin +\$4.20	-54 #11554 Pin 1/4-20 Brass Pin +\$4.20	-51 #11551 Pin #10-24 Brass Pin +\$4.20	-SL Silicone Packet +\$4.20
-2P #47 & #51 Brass Pins +\$8.40	-2P2 #47 & #54 Brass Pins +\$8.40	-3P All 3 Brass Pins +\$12.60	-WB Watco Bonding Strip +\$4.20

To add option, add \$4.20 per option to item base price:

2 Options	3 Options	4 Options	5 Options
Add: \$8.40	\$12.60	\$16.80	\$21.00

Examples:

48750-PP-CP = Tub Closure with silicone, PP stopper, no Grid, Chrome finish – Cost: \$20.90

48700-PP-WH-51-WB = 1-H Trim Kit with silicone, PP stopper, White finish, no Grid, #10-24 Pin & Bonding Strip
Cost: \$50.90 (\$42.50 + \$8.40)

4870N-FA-BN-G-54 = 1-H Trim Kit with #11554 pin only, FA stopper, with Grid, Brushed Nickel finish
Cost: \$49.50 (\$45.30 + \$4.20)

Individual Pins available in Parts section of price list.