

Tubular Brass

Model 501-U/502-U

For most regular tubs

Model 551-U/552-U

For most deeper tubs

Model 551-U
Slip 'N Solder

Sturdy 1.5" 17g and 20g Tubular Brass
No Compression Slip Joints

Slip 'N Solder®

SPECIFICATIONS

FEATURES:

- Simply solder two tubes (just like copper fittings).
- No need for an access panel.
- Eliminates need for exact lengths.
- Available on most Watco brass bath wastes; just add "U" to the item number.
- Designed for heavy-duty use in hotels, motels, and rental properties.
- Retainer plate for overflow ell.

APPROVALS (501/502, 551/552):

- Manufactured in compliance with ASME A112.18.2-2005/CSA B125.2-2005; TIL MSE-051.

PATENTS:

- www.watcomfg.com/patents

THREAD SIZE (STRAINER BODY AND DRAIN ELBOW):

- 1 $\frac{1}{2}$ " – 11 $\frac{1}{2}$ NPSM (Coarse Thread)
- 1.865" Major Diameter (outside thread diameter)
- 11.5 threads per inch

PIPING: □ 17g: 501/551 models □ 20g: 502/552 models



ADA

PRESFLO® (PF) and
Foot Actuated (FA) only

See price list for complete item numbers and available options.

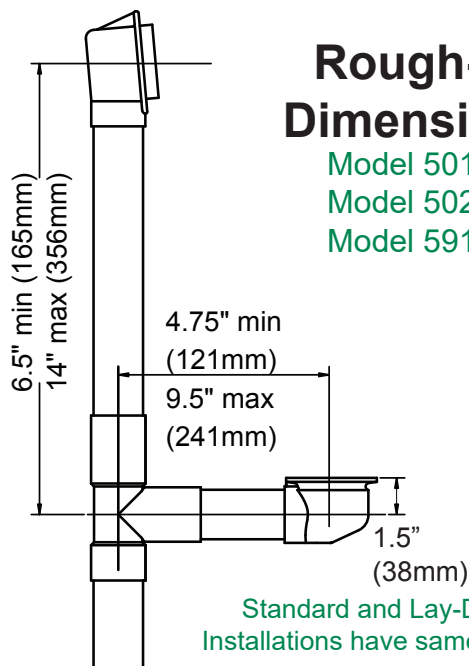
When ordering, please specify complete item number
and any applicable option codes.

WATCO



Always a step ahead

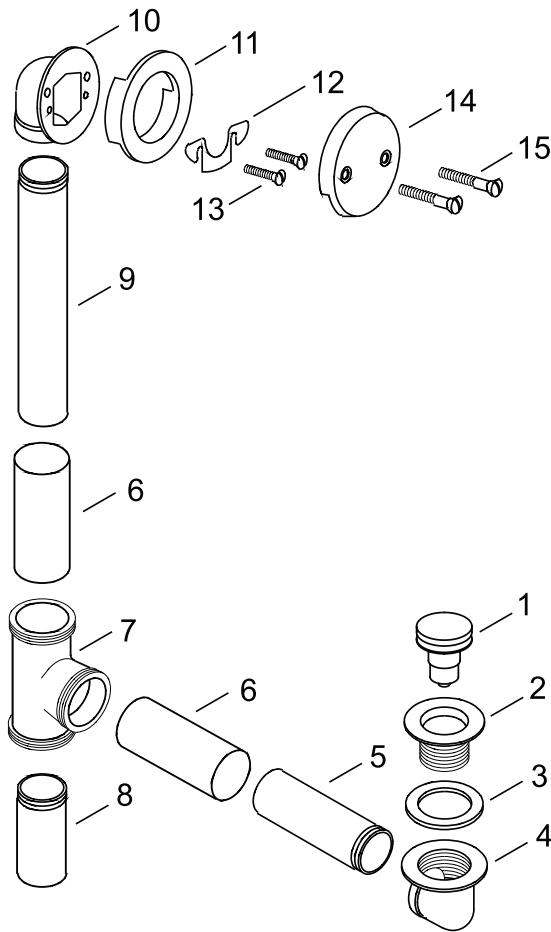
For More Information Contact:
WATCO Manufacturing Company
1220 South Powell Road
Independence, MO 64057-2724
Ph. 816-796-3900 • FAX 816-796-0875
www.watcomfg.com



Rough-In Dimensions

Model 501-U
Model 502-U
Model 591-U

Standard and Lay-Down
Installations have same dimen-



Item	Part #	Description
1	38412-__*	Foot Actuated Stopper, 3/8" pin
2	11492-CP	Strainer Body, Zinc, 1.865" - 11.5 - 1.25"
	01016-__*	Strainer Body, Brass, 1.865" - 11.5 - 1.25"
3	10696	Drain Ell Washer, 1.5" gray, CT
4	44006	Brass Drain Ell, 11/2" - 11.5
5	17GA-4.75	Drain Ell Tube (17g), 4.75"
	20GA-4.75	Drain Ell Tube (20g), 4.75"
	17GA-9.625	For 551-Drain Ell Tube (17g), 9.625"
	20GA-9.625	For 552-Drain Ell Tube (20g), 9.625"
6	41021	1.508 I.D. Slip Tube, 17g Brass, 3"
7	U80255	Brass Tee with Seat
8	17GA-3.5	Drain Ell Tube (17g), 3.5"
	20GA-3.5	Drain Ell Tube (20g), 3.5"
9	17GA-9.625	Overflow Ell Tube (17g), 9.625"
	20GA-9.625	Overflow Ell Tube (20g), 9.625"
	17GA-18.12	For 551-Overflow Ell Tube (17g), 18.125"
	20GA-18.12	For 552-Overflow Ell Tube (20g), 18.125"
10	44003	Overflow Ell, Brass
11	40675	Overflow Ell Washer for Brass
12	11530	Retainer Plate
13	41540	Brass Screw for Brass Retainer Plate
14	01003-__*	Overflow Plate, 2-Hole, metal
15	01024-__*	Overflow Plate Screw, 2.25"

* Please indicate finish desired.

PUSH PULL®
Coarse Thread

- 01010CP
01010-__*
- 11584
- 01013CP
01013-__*
- 11507
- 01016CP
01016-__*

LIFT & TURN
Coarse Thread

- 01010CP
01010-__*
- 11079
- 11088
- 11290CP
01013-__*
- 11507
- 11492CP
01016-__*

PRESFLO®
Coarse Thread

- 11145CP
11145-__*
- 11132
- 11060CP
11060-__*
- 96039:
Suction Cup
for removing
stopper

FOOT ACTUATED
Coarse Thread

- 38412-CP
38412-__*
- 11492-CP
01016-__*

*If finish other than Chrome is desired, please use this part number and indicate desired finish.

Finishes Available in the 501/551/591-U Series:

Tub Closure:	PUSH PULL®	LIFT & TURN	PRESFLO®	FOOT ACT.
CP - Chrome Plated	•	•	•	•
AP - Aged Pewter	•	•	•	•
BB - Brushed Bronze	•	•	•	•
BN - Brushed Nickel	•	•	•	•
BO - Bone	•	•	•	•
BS - Biscuit	•	•	•	•
BZ - Oil-Rubbed Bronze	•	•	•	•
CB - Chrome Brushed	•	•	•	•
NP - Nickel Polished	•	•	•	•
PB - Polished Brass	•	•	•	•
WH - White	•	•	•	•
WI - Wrought Iron	•	•	•	•

